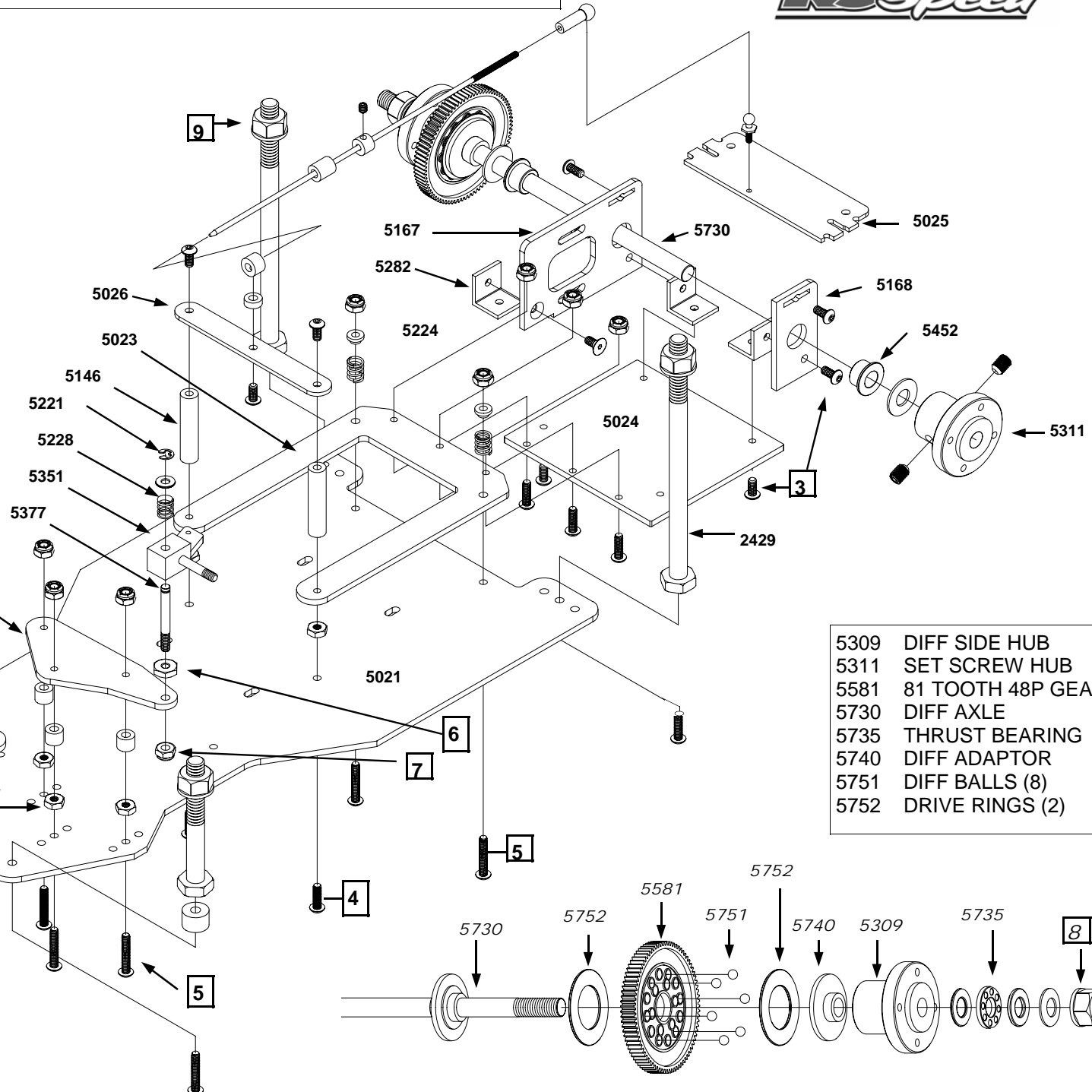




RJS200 SPORT 3.2 KIT LESS ELECTRICS

- 1039 STOCK CAR BODY
- 2403 BODY CLIPS
- 2427 2" BODY POST (2)
- 2429 4" BODY POST (2)
- 5021 CHASSIS PLATE
- 5022 A-ARM (2)
- 5023 U-PLATE
- 5024 BOTTOM PLATE
- 5025 REAR BRACE
- 5026 SUPPORT PLATE
- 5146 SUPPORT POST (2)
- 5167 MOTOR MOUNT
- 5168 LEFT AXLE MOUNT
- 5221 E-CLIPS
- 5224 SPRING BUSHING(4)
- 5228 FRONT SPRING (2)
- 5229 REAR SPRING (2)
- 5282 ANGLE BRACKET (4)
- 5308 STEERING LINKAGE
- 5351 STEERING BLOCK (2)
- 5364 STUB AXLE (2)
- 5377 KINGPIN (2)
- 5452 REAR BUSHING (2)
- 5457 FRONT BUSHING (4)



HARDWARE

- 1 4-40 JAM NUT
- 2 4-40 LOCK NUT
- 3 4-40 X 1/4 BUTTON HEAD SCREW
- 4 4-40 X 3/8 BUTTON HEAD SCREW
- 5 4-40 X 5/8 BUTTON HEAD SCREW
- 6 5-40 JAM NUT
- 7 5-40 LOCK NUT
- 8 1/4-28 NYLON DIFF NUT
- 9 1/4-20 NYLON BODY POST NUT

- 5309 DIFF SIDE HUB
- 5311 SET SCREW HUB
- 5581 81 TOOTH 48P GEAR
- 5730 DIFF AXLE
- 5735 THRUST BEARING
- 5740 DIFF ADAPTOR
- 5751 DIFF BALLS (8)
- 5752 DRIVE RINGS (2)